

Part 1 - AAUW-WA August 2018 Ellensburg Leadership Conference

Panel Report from:

- Palouse Garfield branch
- Gig Harbor branch
- Port Townsend branch

PALOUSE-GARFIELD BRANCH

1. Mission Based Programming



Yvonne Berliner, Tech Trek Coordinator/Programs VP
AAUW Palouse-Garfield Branch

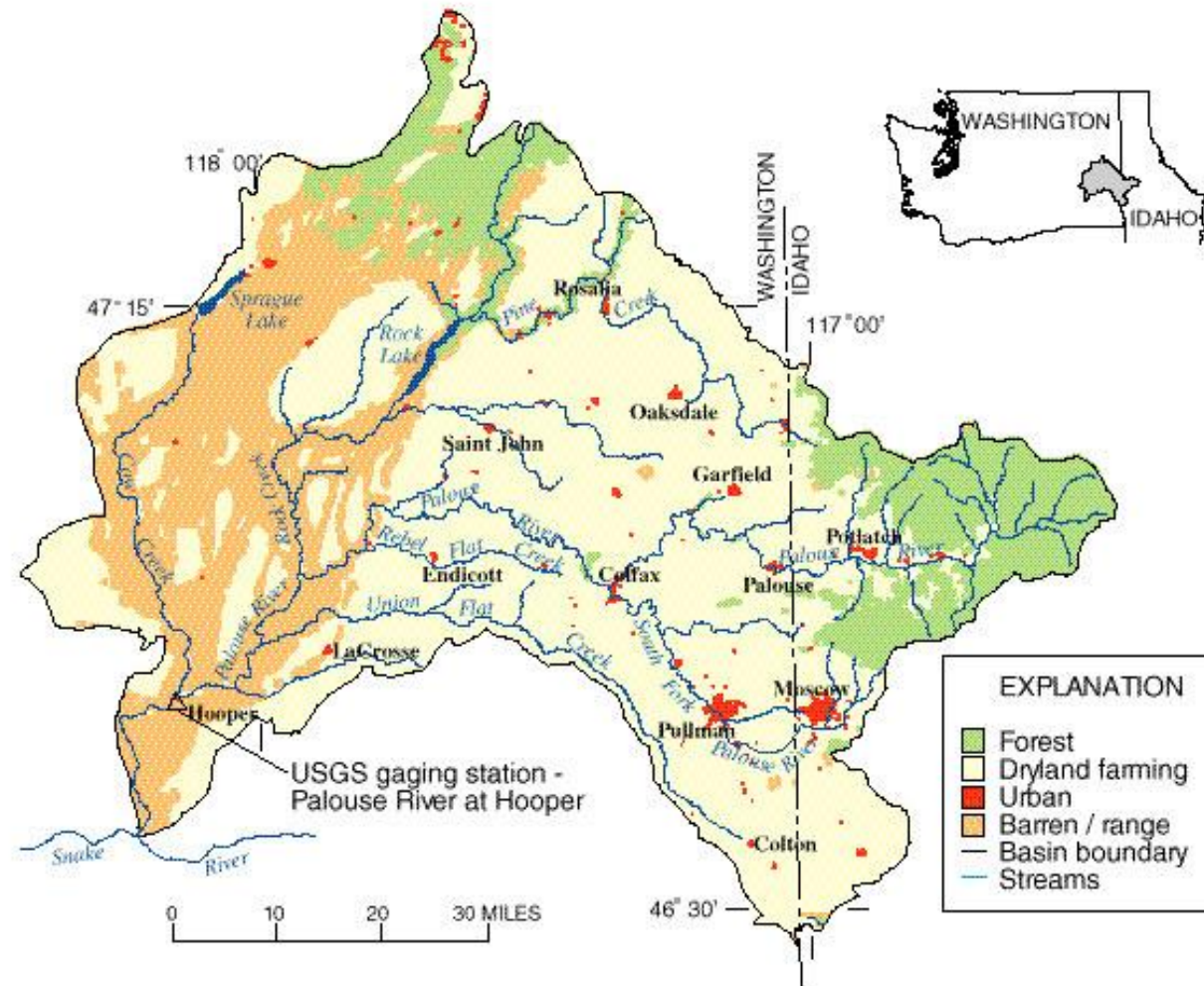
Here is one story:

Where we are....

- The Palouse
- Wheat and garbanzo fields, July 2018



Approximately 40,000 people:



<http://www.nezperceswcd.org/Watersheds/PalouseRiver.aspx>

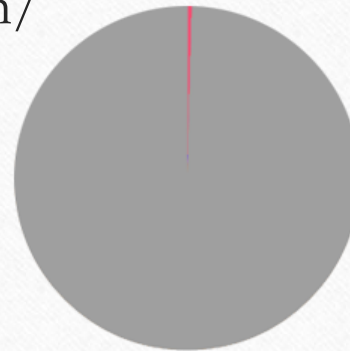
A disperse community...

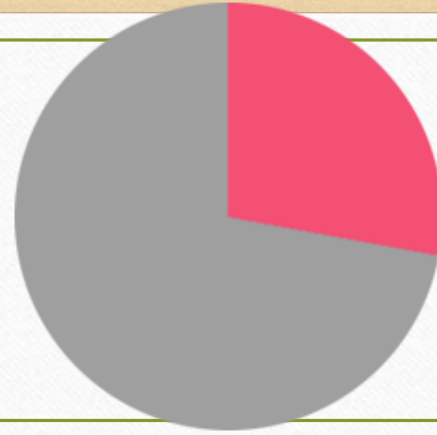
- Members from Garfield, Elberton, Oakesdale, Palouse and farms in between
- Branch began **November 1938** with 10 members, 25 at its peak, 11 now
- Mission priority has always been EDUCATION
 - Community support
 - Focus on girls and women
 - Members



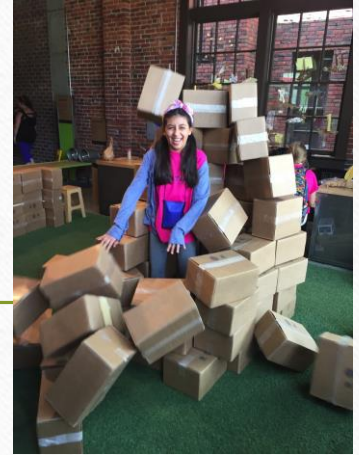
And then we heard about STEM and Tech Trek Camp!

- In middle school, **74%** of girls express interest in Science, Technology, Engineering and Math (STEM)
- But in *computing, for example*, just **0.3%** of high school girls select computer science as a college major.
- Source: <http://www.girlswhocode.com/>





-
- The U.S. Department of Labor projects that by 2020, there will be 1.4 million computer specialist job openings.
 - Yet U.S. universities are expected to produce only enough qualified graduates to fill **29%** of these jobs.
 - Source: <http://www.girlswhocode.com/>



- ENERGIZED!
- STEM Prize since 2008
- Tech Trek Camp since 2015

Girls we sponsored or interviewed for Online Branch since 2015:

- **15 girls** from Oakesdale, Garfield, Palouse, Farmington, Tekoa, Oakesdale, LaCrosse, Clarkston
- 2018- **6** more



Key to success > VISIBILITY IN OUR COMMUNITIES:

For Tech Trek Camp, we raise funds through sale of local commodities and through donations from local businesses



Old Mill Days, Oakesdale

July, 2017 and 2018



- Visits to our table, buying some delicious local commodities and donating to help sponsor more girls to Tech Trek camp!



A work session to make our boxes:



THANK YOU TO OUR GENEROUS DONORS!!!

This summer, the Palouse-Garfield branch of A.A.U.W. will be sending five local middle school girls to the week-long Tech Trek Science Camp on the E.W.U. campus in Cheney.

Banner Bank • Folsom Hardware • Kirkpatrick, Utgaard and Perry, P.S.
The McGregor Company • Max & Dorothy Ashmead • Mokri Designs
Palouse Grain Growers • Roger Guiney & Linda Hurley • Tick Klock Drugs
Schweitzer Engineering Labs • Country Styles • Gary & Doris Slaughter Rea
Louise McCombs & Richard Slaughter • Margaret Ray • Mickey Slaughter
North Butte Tree Farm • Pape Machinery • Rosauers of Colfax
Susan & Harvey Sachs • The Written Wood • Crossett's Food Market

The American Association of University Women
proudly supports girls' education.

PAGE 6A • Thursday, May 17, 2018 • Whitman County Gazette

VISIBILITY:

- Thank you ad to donors in local paper
- Visit to MS principals in each little town to say who we are and what we can do for their students
- Participate in school awards ceremonies

This is our branch ♡



NOW TO YOU:

How can AAUW Branches coordinate public outreach and education with local organizations to broaden the reach of our mission?

Small groups: How does *your* branch answer this question? Share, write it up!

Plenary: Share success!