

The Evergreen Leader

Newsletter of AAUW of Washington
Vol. 20 Summer 2009 No. 4

By joining AAUW, you belong to a community that breaks through educational and economic barriers so that all women have a fair chance



President's Corner

Dixie Swenson
Washington State AAUW President



It seems that the weather is finally following the calendar, and spring has arrived – at least most days!

Our April convention was absolutely wonderful, thanks to the hard work of Peg Eagle, Margie van Waardenburg, and the convention committee. The energy was extraordinary, and there is a renewed commitment to our mission of “advancing equity for women and girls.” Be sure to check out the convention photos, as well as summaries of convention workshops on our website.

We are grateful to Jackie Littleton, association board member, for bringing the discussion of the new by-laws to us in such a positive but balanced way. Association Champions Carolyn Hayek, Connie Dunkelberger, and our regional director, Betsy McDowell, also brought good, thoughtful conversation in those one-on-one sessions which are so very valuable.

As of now, 24 members of AAUW-WA will be attending the June convention in St. Louis. Email addresses of our delegates are listed in the member section of our website www.aauw-wa.org if you would like to make contact before we leave.

Our Summer Leadership Conference will be largely devoted to branch leadership issues and ideas. Nancy Duncan, our Leadership Resources Chair, is leading the program team for the conference. It would be wonderful if each branch could send at least two members - the new president and a future leader. So start planning now – the date is **Saturday, August 1**, and more details will be coming out soon.

Over the next several months, the leadership team will be working on updating state policies and by-laws. We hope to have some preliminary ideas ready for the August 1 Leadership Conference, with a goal of having them ready for adoption at the 2010 convention. Judy Turpin and Sally Kearsley will be leading the team to work on this critical organizational infrastructure.

We all work so hard on branch projects, and sometimes we might wonder if our work makes a difference. I was in Walla Walla recently for their annual dinner meeting, where they also awarded branch scholarships. One of the young women has decided to study engineering – “inspired by first hearing about the field at an EYH conference when she was in 8th grade.” The next young woman on the podium said “hearing that story gave her chills.”

What we do really is important. I look forward to working with all of you to continue to make a difference in the lives of women and girls.

Dixie

INDEX

President's Corner.....	1	Vancouver Bids for Scholarships.....	7
State Convention 2009.....	2	Nancy Fasano-Stepsis Honored.....	7
The Perfect Storm.....	3	Message from VP Program.....	7
AAUW Fellow Skye Elliott Gruen.....	3	Spokane is 100.....	8
Suffrage & Pink Teas.....	4	Dues Time!.....	8
Eleanor Jenkins Endowment.....	4	Equal Pay Day.....	8
Website Launch.....	5	S-C Math Tutor Program.....	9
EF/LAF Year-End Report.....	5	Scholarship Recognition Report.....	9
Memoriam to Mary Skinner.....	6	BDR's.....	10
WA-STEM in Spotlight.....	6	Deadlines/Dates.....	10



What You Experienced or Missed at the 2009 State AAUW Convention

By Peg Eagle, Convention Chair,
Kirkland-Redmond

Many thanks to the convention planning committee members from the North Puget Sound region and volunteers they recruited from their branches for putting on an event that many attendees said was inspirational, diverse, educational and fun. They are Ann Dennis, Seattle; Kat Hughes, Issaquah; Jan Holsbo & Phyllis Keiley-Tyler, Edmonds; Thelma Fong, SE King Co; Leah Amyakar, Lake WA; Emily Hitchens, Highline; Dixie Swenson, state president; and, with a big hurrah for our leader, Margie van Waardenburg, state program VP for planning the topics and many of the speakers and workshops that made up the meat of the convention.

Comments from the evaluation forms [Of course I selected positive ones!]

- ⇒ “The convention had a good mixture of business, new information, and fun. If I had known it would be this useful, I would have started coming long ago – whether I had an office or not!”
- ⇒ “Enjoyed the workshops where we got to share ideas with other branches like leadership and interest groups.”
- ⇒ Liked “engineering focused speakers” [Educational Foundation Fellow and demo of EYH/Career Conference presentation].
- ⇒ ‘The Friday Gala was a great way to kick off the convention with a serious subject [Title IX] presented in a celebratory atmosphere.’
- ⇒ “The variety of speakers was impressive – the best speakers ever.”
- ⇒ “It is nice to have events that give us a break like salsa dancing, the active self-defense class, and the Marketplace and Display area.”

Ideas to take back to my branch:

- Explanation of Association changes and their willingness to listen; especially that \$46 of dues will now be tax deductible.
- “Change is about what’s right.”
- How to use the new website.
- Ideas from other branches.
- STEM information.
- Tips on branch operations.

(continued)

The thing that people were least satisfied with was the cost of holding the convention in Bellevue. The board is looking at ways to keep convention costs down in the future.



Margie van Waardenburg helping Peg Curtin, Boeing engineer, explain how a plane flies



Jackie Littleton, Member of the AAUW Board, discussing the proposed changes to the national bylaws



Tracey Sherman, AAUW Government Relations Manager speaking about public policy issues



Nellie Bly (aka Debbie Dimitre) recounting some of her adventures



HAVE YOU HEARD . . . ABOUT THE CONTEST GOING ON . . . YOUR BRANCH CAN PARTICIPATE, SUPPORT THE EDUCATIONAL FOUNDATION, AND HAVE A GREAT TIME, TOO!

Branch Members – have you heard, there’s a **Contest Going On** for AAUW - Washington and YOUR BRANCH is invited to JOIN TOO! So grab your branch member list, call or e-mail your friends and put together a group to go see the Seattle Storm. We’ll have a great night together.

On July 15, AAUW-WA is hosting a night at the Storm in Key Arena. That evening is the big contest between Seattle Storm and Detroit Shock, the reigning champions of WNBA. Tip-off is 7:00 PM in. Bring your family and friends. Tickets are \$20 each. For every ticket sold at least \$5.00 will go to the AAUW Legal Advocacy Fund/Educational Foundation. If AAUW members sell over 100 tickets, \$8.00 from each ticket will go to LAF/EF. (This portion will be tax deductible to the extent allowable by law, and branches will receive credit for their members’ donations.)

At last count, 49 tickets had been sold: Kirkland-Redmond - 13, Lake Washington and Tacoma were tied at 12 each . . . so it is neck and neck right now. And more may have come in. While we are getting the tickets for \$20 each, they usually sell for \$32. It’s a great deal. Some of the branch groups are going out to dinner before hand and making an evening of the event. Until we sell 100 tickets, we will not know how much we are getting.

With 50 tickets sold, **we have made \$250 for EF**. If we sell another 50, that figure moves up, not to \$500, but to \$800. If only 99 tickets sell, AAUW-WA makes less than \$500 for EF. So it’s a real incentive to fill those seats with 100 people!

To reserve tickets today, contact: Zachary Fraser, Director of Ticket Sales at the Seattle Storm, 206-272-2656, or send him e-mail at zfraser@stormbasketball.com with your name and phone number and the best times to reach you!

Let’s fill those seats! Pile in those cars and come out for a terrific night with the Storm and the Shock!

Kelvie Comer, AAUW-WA EF/LAF Chair

Skye Elliott Gruen— AAUW Fellow



Skye Elliott Gruen, AAUW Fellow, was a featured speaker at the 2009 AAUW-WA state convention. She writes here about her research into building-integrated solar power systems.

Education fellowships like the **Select Professions Award**, which was awarded to me by AAUW in 2006 and supported me through my first year of graduate school in Mechanical Engineering, are crucial to advancing not only women’s education in math and science, but in changing the trajectory of the field in general. The field of scientific research is changing dramatically, perhaps faster than ever before, due in large part to a tremendous influx of new ideas and perspectives. Much of this rapid development is a consequence of the emergence of more and more cross-disciplinary and cross-cultural collaboration. By drawing from multiple disciplines and backgrounds, we gain the benefit of novel perspectives that challenge existing paradigms and push forward innovation.

I am now pursuing a PhD at Rensselaer Polytechnic Institute, where I am part of an interdisciplinary collaboration at the Center for Architecture Science and Ecology, an initiative that brings together architects, engineers, scientists, and designers to address the need for accelerated innovation of radically new sustainable built environments through the development of next-generation building systems. My work on optimization strategies for building-integrated solar power systems and the implications for architectural design and systems integration epitomizes the strengths of interdisciplinary research. Building-integrated photovoltaic systems designed to capture and transfer electrical and thermal energy generated on-site have been demonstrated to substantially reduce the energy profile of a building. My research focuses on optimizing overall system design for a range of building applications, with specific emphasis on balancing the conflicting needs for heating, cooling, lighting and electricity. Future work will examine the potential for tech transfer from large-scale high-end buildings to applications in communities not connected to a centralized utility grid. These communities benefit tremendously from adopting point-of-use distributed power systems by avoiding the high costs of constructing and supporting a centralized utility. Additionally, on-site energy generation eliminates the losses of electrical efficiency during conversion, transportation and distribution, and reduces the risks associated with a system dependent on extra-regional supply chains.

Suffrage Centennial and Pink Teas **by Connie Dunkelberger,** **AAUW-WA Historian**

The two-year-long Suffrage Centennial Celebration has begun. The traveling exhibit "Women's Voices, Women's Votes" opened in Tacoma and will remain there through the summer months; then it will proceed to the next destination. This is the schedule for the four cities around the state.

- Washington State History Museum, Tacoma: Feb. 28, 2009 through Sept. 27, 2009
- Yakima Valley Museum: Feb. 11, 2010 through June 20, 2010
- Museum of History & Industry, Seattle, July 17, 2010 through Oct 3, 2010
- Northwest Museum of Arts & Culture, Spokane, Oct 30, 2010 through June 26, 2011

While the exhibit is at the State History Museum in Tacoma, there are packaged events for organizations to visit the exhibit and celebrate the centennial in whatever manner they wish, such as hosting or attending a Pink Tea. The information for event planning can be found at: <http://www.washingtonhistory.org/wshm/rentalspromotion.aspx>. The other venues of the exhibit may have similar offerings. A Pink Tea might be something for AAUW members to organize for an area event that would involve several branches.



What is a Pink Tea? These teas were used to get Suffrage information to women in the community and to recruit additional workers. They were elegant enough to keep men and staunch traditionalists from thinking the ladies were working on anything as unseemly as trying to get votes for women. At the tea, Suffrage activists would give their hard sell on why women needed the vote.

One goal of the Women's History Consortium over the next two years is to find historical homes where Pink Teas may have been held. They were not reported as suffrage meetings in the newspapers, but were told about on the women's pages giving praise to the pink decorum of the day.

On May 15, of this year a Pink Tea was held at the Governor's Mansion. The event was sponsored by the Governor's Mansion Foundation, which is also in a celebratory mood, as the mansion is also 100 years old. Governor

Hay was the first to occupy the mansion after being elected as Lt. Governor the previous election and ascending to the head of state after the elected Governor died before he could be sworn into office. With that accident of fate, a pro-suffrage first lady, Marion E. Hay, was able to use many opportunities to make sure her views were known and one of her speeches was reenacted at the tea this month.

Members wishing to volunteer to do research to help plan a suffrage event in their community or to be a part of this two year long state-wide event should contact their branch historian, or Connie Dunkelberger, AAUW State Historian at historian@aauw-wa.org.

Eleanor Young Jenkins American **Endowment Completed**

By Kelvie C. Comer, Incoming EF Chair

Ten years before he and his wife Eleanor were killed in a terrible motor accident, Glen Jenkins from Cookville, Tennessee had seeded an AAUW endowment. After their death, the endowment languished with an occasional contribution coming in from local AAUW members, but it was clear that it needed assistance.

Two AAUW friends of mine, Kathie Gilbert of Grant, NM and Jeanie Randall of Clarksville TN and I decided that this endowment needed to be finished. Eleanor had nurtured each of us in AAUW and it was time to bring this endowment to income producing levels. We each came up with a list of people who might become major contributors, especially those who knew and loved Eleanor. And, each of us continued our own financial commitments leading the way. We reached out to our old branches; we reached out to places where Eleanor lived as a young woman and started her career as a teacher; and we reached out to old friends all over the United States. Over several years, 23 branches contributed to this project and we were able to raise over \$55,000 in that time.

We developed a brochure; we made phone calls; we connected with divisions; we attended regional meetings; we sold chocolate chip cookies for amazing amounts of money; and we wrote letters to old friends who knew Eleanor a long time ago. Together, we were able to accomplish what we couldn't have done if there had only been one of us.

Thanks to the branches and members in Washington who contributed, raised money, bought cookies, and helped finish this endowment. Now AAUW can begin to consider women to give the funds to. We should all be proud of this great organization to which we belong. Congratulations, Ladies!

Houston, We Have Launch

By Ann Dennis, Communications Vice President

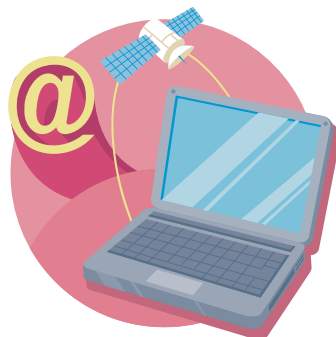
Nearly a year after the state board approved the budget for a new website, www.aauw-wa.org has been launched. We hope that all of you have had an opportunity to check it out. Our goals were to have a website that would attract new members and entice "old" members to use it often. So far, the response has been very positive.

One of the advantages we were looking for was the ability to keep our site current at a reduced cost. Already, our monthly expenditures have dropped considerably. Also, we now have the capability for branches to edit their own web page with programs, pictures, and other timely information and soon, they will be able to update their branch officer lists. If you have not yet selected a member to update your branch information, please do so and notify me at communications@aaup-wa.org. I will be available to help as much as you need. The goal is to try to keep information accurate, interesting and up-to-date.

One of the problems we have is obtaining correct member information. When members change their email address or mailing address without updating their record in the Association Member Services Database, our state records do not get updated. As a result, our emails and *Evergreen Leaders* do not get delivered. The member will also not receive *Outlook* or other mailings from Association. Likewise, if new members are not added to the Association database through the BDR/ADR process soon after they join, we will not have their name and member number, and they will not be able to log on to the member section of our state website.

One of the things that would help is for branch presidents, finance vice presidents or membership vice presidents to visit the Member Services Database on the Association website often to download their branch roster and check it for completeness and accuracy. **That should be the central place for correct information.** If anyone needs help with doing this, please let me know. We really must keep these records in sync so that all our members stay in the "information loop." If someone in your branch does not receive her *Evergreen Leader* or is not receiving our state emails and her record in the Association database is correct, please let me know so that I can help with tracing the problem.

Thanks to everyone for your support. With your help and input, we can have a great communications system that benefits all our members.



2009 Year-End Report for EF/LAF

by Dr. Leah Amyakar, State Chair of EF/LAF

During 2009, the 1,960 members and 37 branches donated \$10,798.62 to the Legal Advocacy Fund, and \$40,199.80 to the Educational Foundation. Overall our donations were down from the preceding three years. While the goal of \$5.00 per member for LAF was reached, the goal of \$25.00 per member toward EF was not attained.

The contributions made at the Washington State AAUW Convention of 2009 in Bellevue were a huge success. Sales and branch raffles donations accounted for \$126 to LAF and \$1,130 to Educational Foundation programs. Thank you to all branches who brought auction or raffle items, or used books as well as to individual donors. Many members also made significant contributions by purchasing tickets to attend the EF Pre-Gala fundraising reception with Seattle Storm team owner Ann Levinson.

At the convention, we were honored to hear EF recipient Skye Elliott Gruen speak about her grant and her scientific research concerning renewable energy systems for buildings in the future. (See Skye's article elsewhere in this issue.)

Those who participated in the self-defense class that benefited LAF reported a worthy workout and the acquisition of some new "moves".



The Legacy Circle reception was an informal gathering of both Legacy Circle members and non-members. The newest member of Legacy Circle, Thelma Fong of the Southeast King County Branch received her lovely jeweled pin. Welcome Thelma! Others interested in making AAUW a benefactor

through your Will please contact me. Though I am outgoing EF-LAF Chair (Kelvie Comer will be taking over this role), I will remain the Legacy Circle Chair for the coming year.

It has been a pleasure serving on the Washington State Board, meeting so many energetic, dedicated women, and working with all the state branches.

I am confident that our state will continue to shine as a leader in innovative programs and fund raising efforts because we have a positive record for doing so.

In Memoriam Mary Skinner



Longtime AAUW member and Yakima's first Latino legislator, Mary Skinner, died earlier this year after a two-year bout with colon cancer.

Mary Rivera came to Yakima in 1951, a six-year old child of migrant farm workers who spoke no English. Mary was the pioneer for her two younger sisters and her parents when she entered first grade and began to learn the language. She always said her parents were visionary: They believed and instilled the belief in their three daughters that the most important thing the girls could do was to take the opportunity provided to receive a public school education. All three Rivera girls completed their public school education and all three graduated from college.

After graduating from Davis High School, Mary attended Yakima Valley Community College and graduated from Central Washington University with a B.A. in education. She taught at Franklin Junior High before her marriage to Dr. Harlow "Hal" Skinner.

Mary was a 40-year member of AAUW, having joined in Yakima in 1967.

When she and Dr. Skinner moved from Yakima to Walla Walla for two years in 1976 and then to Olympia until 1988, Mary remained active, serving as Branch president in both cities. In May 1985, she was a Named Grant Recipient, AAUW. She returned to the Yakima Branch when the Skinners moved back permanently in 1988.

Mary was first elected as 14th District Representative in 1994 and remained in the Legislature until last year when she stepped down citing her husband's ill health, as well as her own.

Mary Skinner died at 6:35, the morning of Feb 5, 2009, less than a month after her husband's death.

[Ed. Note: Article reprinted from "The Link", Yakima Valley Branch newsletter. More articles about Mary can be found on the Yakima Herald Republic newspaper website.]

Taste of Success – WA STEM in the Spotlight

By Carolyn Hayek, AAUW-WA STEM Chair

Washington STEM Projects will receive national attention on June 26, 2009, when a display summarizing activities from across our state will be featured at the Taste of Success display at our national AAUW convention in St. Louis. One of only 19 groups selected to present displays at this event, ours is one of only two which have a clear focus on Science, Technology, Engineering and Math. The impact of our ideas and success will not end at the convention. The materials we prepare for distribution there will be available on the national AAUW website and expanded resource materials will be available on our updated state website. If your branch has not sent a summary of your STEM activities to Carolyn Hayek, our state STEM chair, please do so now. Please e-mail your materials to stem@aauw-wa.org.



Washington State has an impressive history of activity encouraging girls and women to pursue math and science fields in which our gender is underrepresented.

Lake Washington Branch has sponsored

Expanding Your Horizons conferences for 27 years. Many other branches sponsor or support EYH or similar career workshops in their area. **Walla Walla** sponsors a STEM-related project they call Great Expectations for 5th-8th grade girls (pictured here).

Twenty-five of our branches have participated in the past year in the Scholar Recognition Program and we have extensive materials for this project on our state website and a dedicated state coordinator, Barbara Sando. Ten branches have registered their projects in the program directory of the National Girls Collaborative Project (ngcproject.org), giving them national visibility, access to many planning resources, and eligibility to apply for grants through NGCP. The **Dayton Branch** received a NGCP grant last year and completed a successful project in which 5th Grade girls traveled to WSU to evaluate displays created by university neuroscience students. Other branches have also supported science fair projects in their communities.

AAUW works to break through barriers so women and girls may achieve their dreams and potential. Please share the success your branch has had in this area so we can help one another become more effective and so we can celebrate our collective achievements. Together we make a difference in the lives of women and girls across the state.

Vancouver Branch Bridge Players Help to Fund Scholarships

The Vancouver Branch of AAUW held their 5th Dollars for Scholars Bridge Tournament at the Clark County Genealogy Center. They netted \$765 towards their scholarship fund for women attending Clark College or WSU Vancouver.

Pictured from left to right are first and second prize winners Pat Greear, Carol Goodrich and Bridge co-chair Anna Whipple.



Nancy Fasano-Stepsis Honored by WSU -Vancouver as Woman of Distinction



Fittingly, on March 4, 2009, WSU Vancouver inaugurated their celebration of Women's History Month honoring women who have inspired, mentored and empowered others by recognizing a Woman of Distinction.

Men and women alike gathered in the WSU Firstenburg Student Commons to celebrate and honor distinguished women from the

community who serve as positive role models. Not a single seat remained empty as the audience anticipated the women who have truly made a difference to be called forward. These women were nominated by students, faculty members, and members of the community. Of the many women recognized, Dr. Nancy Fasano-Stepsis was presented as the Woman of Distinction for 2009. Present to celebrate this honor with her was her husband, Bob, and her daughter, Robin, from Tucson and many AAUW members.

Nancy believes that she received the award mainly due to her involvement leading conversation sessions at the library for immigrants who wish to practice and learn English. She is also the treasurer of the Friends group in the Fort Vancouver Regional Library. Nancy has been the president of the Vancouver branch of American Association of University Women (AAUW) for four years. She has overseen the branch's surge in membership growth, increased scholarship contributions to both Clark College and WSU Vancouver for local women and a renewed spirit

of community involvement for the branch.

An active, storied branch, Vancouver AAUW is one of the oldest branches in the state having been established in 1931. In its recent history it has produced 10 YWCA-Clark College Women of Achievement recipients and two state legislators, Val Ogden and Deb Wallace. To that we add the inaugural WSU Vancouver Woman of Distinction.

As the daughter of a doctor, Nancy and her two sisters entered the nursing field. Nancy holds a BS, MS and a PhD. Nancy was a nursing educator and an administrator of nursing for thirty years. As an administrator, Nancy felt she was in a position to empower students and faculty. Among her accomplishments is the formation of a health promotion center that cares primarily for women and children. "What I believe in doing for others is in fact empowering women and providing opportunities for them to develop to as much of their potential as possible," says Nancy. She advises women who want to have an influential role in society to, "find the area you are interested in, become very knowledgeable about that area, and go for it."

While it has become easier for women to succeed and discrimination is much less common, Nancy says that women face unique challenges. More women are pursuing their advanced education, making them employable even during tough economic times. With role models like the ones honored, women everywhere can be inspired to pursue their dreams despite obstacles they face.

A Message from Your VP Program By Margie van Waardenburg

Thanks for electing me to a second 2 year term at the state convention in April. I am excited to be able to work on programs that will carry on our convention theme of "Promoting the Mission, Living the Vision". I've had great feedback over the last 2 years about programming that works and look forward to collaborating with individual branches further in the next 6 months to put together "programs in a box" that may be used within your branch meetings as well as in the community. Exciting times are ahead for all of us as we grow our organization, one member at a time. It would be helpful to me if each branch's incoming program chair can provide me with contact information, specifically, e-mail and phone numbers. Please send an email to mission@aauw-wa.org and include your name, branch, e-mail address, telephone number, and preferred method of contact.

Keep spreading the message: "By joining AAUW, you belong to a community that breaks through economic and educational barriers so that all women have a fair chance."

Spokane Invites You to Their 100th Birthday Celebration



On October 17th, 2009 Spokane will become the third branch in the state after Seattle and Tacoma to celebrate the centennial anniversary of its founding. Everyone is invited to attend this momentous event which will be held at the historical Davenport Hotel in downtown Spokane. The celebration will begin with a no-host social at 11:30 a.m., followed by a banquet at 12 noon and program, "A Century of Breaking Barriers" at 1:00 p.m. The cost for the event is \$35.00. What a wonderful opportunity to visit Spokane. Plan to load your car with AAUW friends and head on over.

Prepaid reservations must be made by October 10th. Checks should be payable to Spokane Branch AAUW and mailed to Toni Savalli, 2929 S. Waterford Drive, #204, Spokane, WA 99203.

If you would like to stay overnight at the Davenport Hotel, call 1-800-899-1482.

See you in Spokane!

It's Dues Paying Time, Again! By Pauline Barrett, VP Finance

As AAUW's fiscal year ends June 30 each year, the goal has been for each Branch to have completed collecting every member's dues and submitting the portion of Association and State dues by that date.

Effective April 1, 2009, \$46.00 of the \$49.00 of the Association portion of AAUW dues paid are tax deductible. The remaining \$3.00 per member will go into the AAUW Action Fund to be used for lobbying activities. If you want more information email me at finance@aauw-wa.org or talk to your branch finance officer.

State dues remain at \$8.00 per member. These dues pay for a lot: our new web site that is better than "new and improved!" We hire a lobbyist to represent our interests during the legislative session. We create and distribute 4 copies of the State newsletter the *Evergreen Leader* each year. Look at our web site for more evidence at how far your dues reach.

I urge you to be prompt when the word **DUES** is spoken. Your branch treasurer will thank you!

South Central Washington Branches Mark Equal Pay Day

On April 28th branch members from Dayton and Tri-Cities met in Walla Walla to emphasize the need to reduce the pay gap between men's and women's paychecks nationwide. The discrepancy between the 78 cents that women earn nationwide for every dollar earned by men for comparable work experiences is only heightened by AAUW research which shows that Washington State fares three to four percent less than the national average.



To draw attention to the need to support the Paycheck Fairness Act, Washington State AAUW President Dixie Swenson and State Co-Public Policy Chair Judy Blair met with women from three branches in South Central Washington State. Debbie Baxter and Sherrie Flaman Kiefer joined the group from Dayton; Kathy White and Marji Parker arrived from Tri-Cities; and Eleanor Buckey, Janey McKern, Kay Raddatz, Darcy Henry, and Linda Howell represented the Walla Walla branch. The road trip was embellished by Kay Raddatz who gave Dixie and Judy an afternoon tour of the Walla Walla Community College campus where next year's Washington State Convention will be held.



Dues are Due!

Stanwood-Camano Branch Honored for Math Tutoring Program

by Georgi Proulx



What began nearly four years ago as a small math tutoring program at Stanwood High School, has grown to service four of the five local elementary schools with tremendous success.

The Stanwood-Camano AAUW branch wanted to promote better understanding of

math and science with local students. In the fall of 2005, Frances LaCroix, a former school counselor and member of AAUW, worked with the local high school to set up a program recruiting several excited branch members to take part. While the high school tutoring program was not as successful as they hoped, it became the genesis for a very successful elementary school math project.

Frances spoke again with the Stanwood-Camano School District and learned that the sweet spot for maximum impact was at the elementary level, especially working with students whose performances are just below grade level.

Two of the district's five schools had mathematics instructional coaches on staff. In the fall of 2006 four tutors were assigned to each of those schools. Under the direction of the coach, each tutor sat with four students from each grade-level for one-half hour each week. They worked through problems and played math games.

"We were eager to form the partnership," said Staci Lauinger, a District mathematics instructional coach. "We began by gathering student achievement data to make sure we served the students that would benefit the most."

The students chosen were third, fourth and fifth graders who fell just below the national standard on the Measures of Academic Progress (MAP) tests. At the end of the school year, formal and informal assessments showed an increase in the students' math achievement.

Unfortunately, personnel and district changes meant that the district's mathematics instructional coaches were no longer going to be on location at a particular school for the 2007 school year. Neither the schools nor the tutors wanted to lose the program so Janice Hertz and Claire Winget, members of the Stanwood-Camano AAUW branch, partnered with the coaches to meet monthly at the district office to exchange materials and games with the tutors. At the same time the program expanded as branch members' spouses were invited to become tutors. At the end of the 2007-2008 school year more than 60% of the

students tutored passed the spring 2008 mathematics portion of the WASL and many more showed notable improvement.

As they learned of the program's success, other district schools began clamoring for similar programs. Janice began to recruit and coordinate additional volunteers. She expanded the program to include tutors who were not AAUW members and, as a result, the program now has 16 regular volunteers providing tutoring to 128 third, fourth and fifth grade students at four of the five district elementary schools.

"This partnership is a model for steady, consistent, targeted, effective support that shows the dedication of community coming together behind our children and schools," said Victor Hanzeli, Stanwood Elementary School principal.

The Stanwood-Camano School District has chosen Janice to receive the Washington State School Administrator Association's Community Award at their celebration on May 21, 2009 for recognition of the Stanwood-Camano AAUW branch and the difference the women in the group have made in the community.

The Stanwood-Camano AAUW branch is proud of the tutoring program they have created. It has raised community awareness of AAUW and our mission while both students and tutors are enriched by the experience. For more information, contact Janice Hertz at jhertz@exmsft.com.

AAUW-WA Scholar Recognition Programs – 2009

By Barbara Sando

While our final count is not yet in, I am pleased to report that at least 25 of our 37 Washington State AAUW branches participated in the Scholars Recognition program this year. And, some of our projects will be featured in our "Taste of Success" display at the AAUW National Convention in St. Louis! I am currently collecting the names of all of the award recipients, and they will be posted on our new website this summer.

I will be continuing in my role next year, and look forward to working with our branches again to honor young women for their achievements in math, science and technology. As Scholars Recognition chair for Washington State, I am here to be a resource to the branches, whether they've been doing the project for years, or want to embark on it for 2009-2010. The project is really quite straightforward, and resources and sample correspondence are available on our new state website. I am also more than happy to answer questions anyone may have on this project. You may contact me at scholarrecognition@aauw-wa.org.

Send in Those Branch BDR's!

By Jessica Koeberle, State Membership VP

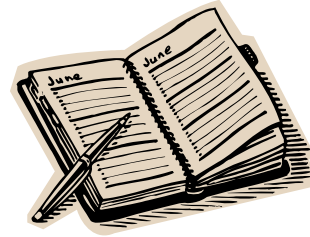
The State Membership and the Finance Vice Presidents work together in receiving all the branch membership reports. The Branch Dues Reports (BDR's) are due in July. Any reports later are listed on the Additional Dues Reports (ADR's) for those who rejoin late or are new members.

There is a continuing trend for organizations similar to ours to experience a decline in membership. There are 37 branches in Washington; 22 of them have had negative growth over the past three years. There is little difference in trends between the more rural branches and the urban branches. All is not gloom and doom --- this past year we had 16 branches gain in members or hold to their prior number. The largest percentage gain of over 20% were the following 3 branches:

Bellingham 26.9%
Port Townsend 22.4%
Walla Walla 48.3%

The total members for the state has almost reached 2000.

We look forward to receiving the BDR's from each and every branch during July, so get those dues reminders out to your members!



Deadlines and Important Dates

2009

- June 26-28.....AAUW National Convention, St. Louis, MO
- July 15.....Seattle Storm WNBA game to benefit AAUW-WA EF, Key Arena
- August 1..... AAUW-WA State Leadership Conference – Place and agenda to follow
- September 15Fall *Evergreen Leader* articles due evergreenleader@aauw-wa.org
- October 17Spokane Branch Centennial Celebration

Mission Statement: AAUW advances education and equity for women and girls through advocacy, education and research.

Value Promise: By joining AAUW, you belong to a community that breaks through educational and economic barriers so that all women have a fair chance

Membership in AAUW is open to all graduates who hold the associate (or equivalent), bachelor's or higher degree from a regionally accredited college or university.

In principle and in practice, AAUW values and seeks a diverse membership. There shall be no barriers to full participation on the basis of gender, race, creed, age, sexual orientation, national origin, disability or class.

Address labels for *The Evergreen Leader* come from the Association office in Washington, D. C. Changes cannot be made by the editor. Send address changes to your branch membership vice president and to:

AAUW Records Office
1111 16th St. NW
Washington DC 20036-4873

You may also change your address through the Association website, in the member center.

Association Website: www.aauw.org
Association Member Helpline: 1-800-326-AAUW

AAUW of Washington Website: www.aauw-wa.org

THE EVERGREEN LEADER

The American Association of University Women of Washington
Sherie R. Schafer, Editor
313 E. 6th Avenue
Ritzville, WA 99169

Non-profit Org.
U. S. Postage
PAID
Snohomish, WA 98290
Permit #108